

792426 - Fully Cooked Whole Grain
Whole Muscle Chicken Breakfast Fillet

Nutrition Facts

servings per container
Serving size (56g)

Amount per serving
Calories 100

	% Daily Value*
Total Fat 3.5g	4%
Saturated Fat 0.5g	3%
Trans Fat 0g	
Cholesterol 30mg	10%
Sodium 230mg	10%
Total Carbohydrate 6g	2%
Dietary Fiber 1g	4%
Total Sugars 0g	
Includes 0g Added Sugars	0%

Protein 10g	
Vitamin D 0mcg	0%
Calcium 9mg	0%
Iron 1mg	6%
Potassium 151mg	4%

*The % Daily Value tells you how much a nutrient in a serving of food contributes to a daily diet. 2,000 calories a day is used for general nutrition advice.

Product Specifications

GTIN	00850495005888	Case Net Weight	32 pounds
Item UPC	850495005888	Case Dimensions	14 7/16 x 10 1/16 x 16 5/8
Shelf Life	365 days	Cube	1.4 cubic ft.
Unit Size	8/4 pound bags	Ti x Hi	7 x 7 = 49 cs per pallet
Case Gross Weight	34 pounds	Servings	2.0 oz / 256 per case

Features & Benefits

- * 32.97 donated food pounds per case (White Meat)
- * 2 oz serving
- * Provides 1.0 oz M/Ma and 0.5 oz Grain.
- * Smart Snack Compliant

Preparation & Cooking

Cook Approximately 17 min @ 375. Please note: cooking times may vary based on equipment.



BREADED FULLY COOKED
BREAKFAST
CHICKEN BREAST
WITH RIB MEAT

792426

INGREDIENTS: Chicken breast meat with rib meat, water, salt, sodium phosphate, onion powder, garlic powder, modified corn starch.

BREADED WITH: Whole wheat flour, enriched wheat flour (wheat flour, niacin, reduced iron, thiamine mononitrate, riboflavin, folic acid), salt, spices, sucrose, dried yeast, garlic powder

BATTERED WITH: Water, whole wheat flour, enriched wheat flour (wheat flour, niacin, reduced iron, thiamine mononitrate, riboflavin, folic acid), buttermilk solids (buttermilk powder, whey solids, nonfat dry milk), salt, dextrose, citric acid, leavening (sodium acid pyrophosphate, sodium bicarbonate, monocalcium phosphate), xanthan gum.

PREDUSTED WITH: Whole wheat flour, enriched wheat flour (wheat flour, niacin, reduced iron, thiamine mononitrate, riboflavin, folic acid), leavening (sodium bicarbonate, monocalcium phosphate, sodium acid pyrophosphate), salt, spices, corn starch, garlic powder. Breeding is browned in soybean oil

CONTAINS: WHEAT, MILK



00850495005888

HEATING INSTRUCTIONS: CONVENTIONAL OVEN 20 MIN @ 350. CONVECTION OVEN 14 MIN @ 350



P-27505A

NET WT. 32 LBS

PACKED BY
GOLD CREEK FOODS, GAINESVILLE, GA 30601

KEEP FROZEN

Jack Crawford Jack Crawford, Director 12/12/2022

Specifications subject to changes, errors and omissions. 2255 White Sulphur Rd, Gainesville, GA 30601



Attached Divisions 60
Super Class 6 - COP - PORK
Class 30 - PORK
Category 241 - PORK, BACON
Group 2147 - PORK, BACON, SLICED, PRE-COOKED, REFRIGERATED
Manufacturer Number 126076 - SMITHFIELD PACKAGED MEATS SALE
Manufacturer GLN Number 126076
Minority Code 1 - NA
Brand Name PATUXENT FARMS
Brand Type 2 - Exclusive
Country of Origin - Grown/Harvested US - United States
Country of Origin - Processed

Primary ASYS # 2477933
Secondary ASYS # 3581256
Primary PSYS # 402741
Product Master # 405959
USF Product # 405959
Manufacturer Product # 402741
Item ID 12420120
Cash and Carry Eligible Yes

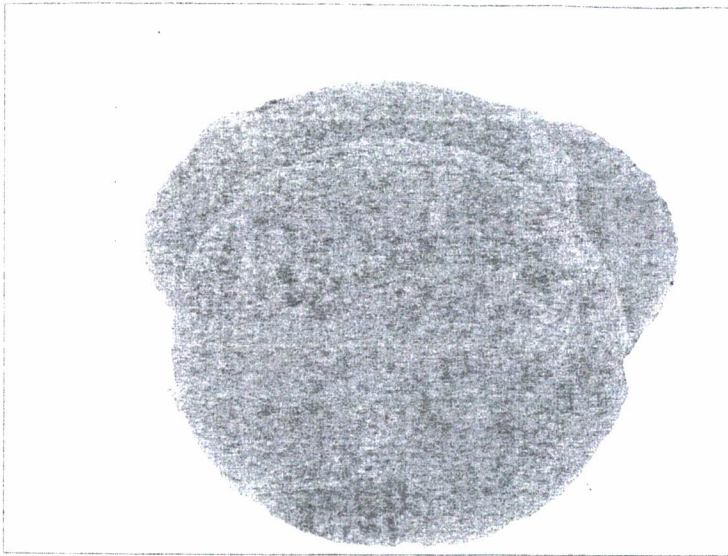
Nutritional Values

QTY UOM RDV			QTY UOM RDV			QTY UOM RDV			QTY UOM RDV			ALLERGENS		
Recommended Serving Size			Polyunsaturated Fat	4.85	g	Magnesium	30	mg	Omega 3			Celery	Not Known	
Serving Size	100	g	Monounsaturated Fat	19.06	g	Pantothenic Acid	1.03	mcg	Acids			Crustacean	Not Known	
Servings per Trade Item	75		Other Carbohydrates			Biotin			Omega 6			Eggs	Not Known	
Calories per Serving	543		Ash	7.12	g	Riboflavin	.25	mg	Acids			Fish	Not Known	
Calories from Fat per Serving	389		Zinc	3.36	mg	Niacin Equivalent	10.62	mg	Vitamin B6	15.45%		Milk	Not Known	
Total Fat	43.27	g	Iodine			Thiamin	.34	mg	Vitamin B12	19.33%		Mustard	Not Known	
Saturated Fat	14.18	g	Folate	2	mcg	Copper	.18	mg	Vitamin Beta-Carotene			Peanuts	Not Known	
Trans Fat			Phosphorous			Soluble Fiber			Vitamin E			Sesame	Not Known	
Cholesterol	107	mg	Nutrient Provided			Insoluble Fiber			Vitamin K			Soy	Not Known	
Sodium	193	mg	Nutrient Provided Date			Alcohol						Tree Nuts	Not Known	
Total Carbohydrates	1.35	g				Sugar						Wheat	Not Known	
Dietary Fiber	0	g				Alcohol						Allergen - Gluten (other than Wheat)		
Total Sugar	0	g				Water	12.52	g				Gluten Free Certified	No	
Added Sugars												Gluten Free		
Protein	35.7	g										Halal Certified	No	
Calcium	10	mg										Kosher Certified	No	
Iron	1.49	mg										Contains Lactose	Yes	
Potassium	539	mg										Contains Latex		
Vitamin C												Made with Gluten Free Ingredients		
Vitamin D												No MSG Added	No	
Vitamin A												MSG Free		
												No Nitrate/Nitrites Added		
												Vegan		
												Vegetarian		
												Allergen		
												Relevant Data Provided		
												Allergen		
												Relevant Data Provided		
Ingredients Cured with: Water, Salt, Sugary, Natural Smoke Flavor, Sodium Phosphate, Sodium Erythorbate, Sodium Nitrite.														

Ingredients Cured with: Water, Salt, Sugar, Natural Smoke Flavor, Sodium Phosphate, Sodium Erythorbate, Sodium Nitrite.

Merchandising

Merchandising Business Unit Name CENTER-OF-PLATE - 100003
Merchandising Director Name BEEF & PORK - 10013
Merchandising Desk Name PORK - 1027
Merchandising Category Name BACON - 7
Merchandising Business Unit Associate CENTER-OF-PLATE
Merchandising Director Associate WINKLER
Merchandising Desk Associate NICHOLS
Product Search Keywords
Benefits Labor-Saving: Pre-sliced and pre-cooked just thaw warm and serve ~ Time-Saving: Packaged layout style for easy handling ~ On-Trend: Bacon is always popular in a variety of dishes ~ Versatile: Suitable for any menu application such as atop sandwiches as a garnish or in quiches ~ Cost-Saving: Packaging allows for exact portions and cost control; Our thinnest bacon offering
Serving Suggestions Great topping for burgers, wrapping chix, beef tenderloin, or use cooked bacon on salads or baked potatoes or as a side dish
Preparation Instructions
Cat Seg Type 01 TYPE - BACON STORAGE **Value** PRE-COOKED
Cat Seg Type 02 STYLE - BACON **Value** LAID OUT
Cat Seg Type 03 THICKNESS - BACON **Value** REGULAR (13-22)
Cat Seg Type 04 SMOKE PROFILE - BACON **Value** APPLEWOOD SMOKED
Cat Seg Type 05 SMOKE LEVEL - BACON **Value** REGULAR
Cat Seg Type 06 FLAVOR PROFILE - BACON **Value** NONE
Cat Seg Type 07 NATURAL CLAIM - BACON **Value** NO ALL NATURAL CLAIM
Cat Seg Type 08 SODIUM CLAIM - BACON **Value** NO "SODIUM" CLAIM
Cat Seg Type 08 ENDS & PIECES - BACON **Value** DOES NOT CONTAIN ENDS & PIECES



PAPETTIS / TABLE READY

Egg

EGG, PATTY SCRAMBLED CHILD-NUTRITION PLAIN 3.5"
ROUND BULK FROZEN IQF COOKE

5465521



300/1.25 OZ

Quantity Available

CS: Out of Stock

Next Expected Restock

07/17

Product Description

Additional Description

PRODUCT OF THE US. COOKED GRILLED.

Ingredients

WHOLE EGGS, WATER, SOYBEAN OIL, MODIFIED FOOD STARCH, WHEY SOLIDS, SALT, NONFAT
DRIED MILK, CITRIC ACID

Product Information

Contains Eggs, milk

CLASS 20 - APPETIZERS, ENTREES & POTATOES REF & F7N

MENU

NC

Manufacturer Product #: 46025-85017-00

Preparation & Cooking

Preparations and Cooking Instructions

PREHEAT TEMP 250F; TIME FROM FROZEN 18 - 20 MIN; TIME FROM THAWED 10 - 12 MIN;
PREHEAT OVEN. PLACE A SINGLE LAYER OF PRODUCT IN FULL-SIZE STEAMER PAN SPRAYED WITH
NON-STICK COOKING SPRAY; DO NOT COVER. BAKE UNTIL THOROUGHLY HEATED.

Handling Instructions

Trucks carrying this product will be loaded and transported in a sanitary manner following all
requirements stated in this specification. Product will be transported and stored at a temperature of
0F (-17.7C) or below with the actual temperature not to exceed 10F.

Serving Suggestions:

Serves as the key ingredient in any breakfast sandwich build or as a tasty addition to popular wraps,
burgers and sandwiches through

Shipping Information

Physical Attributes

Gross Weight:	25.08 LB	Length:	18.625 IN
Net Weight:	23.44 LB	Cube:	1.053 CF
Height:	8.313 IN	Catch Weight:	No
Width:	11.75 IN		

Storage Information

USF Storage:	FROZEN 0
Min. Temperature:	-10 fa
Max. Temperature:	15 fa

Nutrition Facts

300 Servings Per Container

Serving Size (35gr)

Amount Per Serving

Calories 60

	% Daily Value *
Total Fat 4g	5%
Saturated fat	5%
Dietary Fiber 0g	0%
Total Sugars 0g	
Includes 0g Added Sugars	0%
Protein 3g	
Vitamin A	0%
Vitamin C	0%
Calcium	2%
Iron	0%

Supplemental Facts

	% Daily Value *
Vitamin D 1mcg	6%
Potassium 46mg	0%

* The % Daily Value (DV) tells you how much a nutrient in a
serving of food contributes to a daily diet. 2,000 calories a day
is used for general nutrition advice.

Report Discrepancies

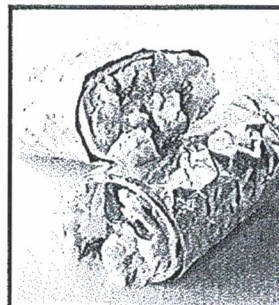
Ingredients, Allergens & Nutrition Information

IMPORTANT: Product information, including ingredients, allergens and nutritional information, is provided by manufacturers/suppliers, and includes information from the Global Data Synchronization Network (GDSN) and other third party sources such as the United States Department of Agriculture. We know that allergen information is important to many customers, so we are providing product information from the manufacturers/suppliers for the FDA's top allergens (<https://www.fda.gov/food/food-labeling-nutrition/food-allergies>), along with other select ingredients. This information may not cover potential cross-contact risks or alternate forms of the allergen(s). Product formulations are subject to change and nutritional values can vary due to production, seasonal and other changes. Please always review the ingredients, allergens, nutrition information and other product information on the product packaging delivered to your location. US Foods does not assume any legal liability and makes no warranty or guaranty, express or implied, regarding the completeness or accuracy of this information. Product images are provided for reference only and may not reflect current packaging.

Precooked Refrigerated Scrambled Eggs, 12/1.85 Lbs

Product Summary

- Fully-Cooked - Just Heat & Serve
- Made with Real Eggs for a Boost of Protein
- Consistency, Quality & Convenience
- No High-Fructose Corn Syrup
- 0g Trans Fat per Serving
- Produced in a Peanut & Tree-Nut Free Facility



Meal Pattern Contribution

- 1.5 oz. equivalent Meat/Meat Alternate (per 2.1 oz. (61g)
(Product not currently Child Nutrition labeled, PFS available)
- USDA Foods Eligible

Ingredient Statement

Whole Eggs, Whey, Soybean Oil, Nonfat Milk. Contains 1% or less of the following: Salt, Natural and Artificial Butter Flavor, Xanthan Gum, Citric Acid.

ALLERGENS: CONTAINS EGG AND MILK

Storage & Handling

- Refrigerate until use
- Do not freeze

Nutrition Facts

165 servings per container
Serving size 1/4 cup (61g)

Amount per serving
Calories 90

	% Daily Value*
Total Fat 7g	9%
Saturated Fat 1.5g	8%
Trans Fat 0g	
Cholesterol 155mg	52%
Sodium 230mg	10%
Total Carbohydrate 2g	1%
Dietary Fiber 0g	0%
Total Sugars 1g	
Includes 0g Added Sugars	0%
Protein 5g	
Vitamin D 1mcg	6%
Calcium 36mg	2%
Iron 1mg	6%
Potassium 94mg	2%

*The % Daily Value tells you how much a nutrient in a serving of food contributes to a daily diet. 2,000 calories a day is used for general nutrition advice.

Calories per gram:
Fat 9 • Carbohydrate 4 • Protein 4

Specifications

- GTIN: 10746025858772
- Shelf Life: 84 Days (Refrigerated)
- Kosher: OUD
- Individually Wrapped: No
- Case Count: 12
- Net Weight: 22.2 Lbs
- Gross Weight: 23.45 Lbs
- Case Cube: 0.54 CF
- Cases per Pallet: 100 (20 x 5)

Prep Instructions

Convection Oven Preheat to 325° F.

Knead cooked egg in bag to break up the structure. Empty the contents of one 1.85 lb bag into half-size steamer pan; cover with aluminum foil. Heat until thoroughly cooked.

Microwave Place individual bags in microwave. Heat on high for 1 min 45 sec to 2 min. Remove and knead in bag. Turn bag over and heat for 45 to 60 sec.

Pressureless Steamer Place individual bags in half-size steamer; do not cover. Knead the bag to break the structure.

Steamtable Empty scrambled eggs into steamtable. Medium temperature.

Refrigerated

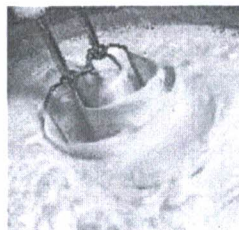
About 25 min.

2.5-3 min.

6-7 min.

Hold for up to 1 hour

Note: Due to variance in equipment, heating and temperature may require adjustment. Product should be heated to 165 degrees F internal temperature.



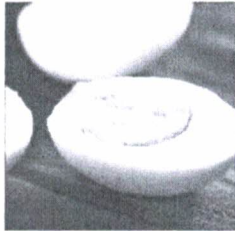
Attached Divisions	57
Super Class	4 - DAIRY
Class	21 - DAIRY
Category	159 - EGGS, FURTHER PROCESSED
Group	1653 - EGGS, LIQUID, PASTEURIZED, RAW, REFRIGERATED
Manufacturer Number	455 - MICHAEL FOODS INC
Manufacturer GLN Number	455
Minority Code	1 - NA
Brand Name	GLENVIEW FARMS
Brand Type	2 - Exclusive
Country of Origin - Grown/Harvested	US - United States
Country of Origin - Processed	

Primary ASYS #	08823
Secondary ASYS #	18274
Primary PSYS #	08045
Product Master #	30533
USF Product #	30533
Manufacturer Product #	80453
Item ID	12271
Cash and Carry Eligible	Yes

[illegible]

Merchandising

Merchandising Business Unit Name	GROCERY & DAIRY - 100001
Merchandising Director Name	CHEESE & DAIRY - 10004
Merchandising Desk Name	CHEESE, EGGS, REF POTATOES - 10124
Merchandising Category Name	EGGS, LIQUID - 345
Merchandising Business Unit Associate	GROCERY & DAIRY
Merchandising Director Associate	DOLLARD
Merchandising Desk Associate	MAZURKIEWICZ
Product Search Keywords	Retail Ready
Benefits	Easily Pour ~ Labor-Savings ~ Refrigerator Space Savings~ Eliminates Food Safety Risks~ Gluten-Free Vegetarian
Serving Suggestions	LARGE BATCHES OF PANCAKE BATTER, CREPE RECIPES, EGG NOG, BAKERY APPLICATIONS: CHEESECAKES, BREAD PUDDING, BISCUITS, POUND CAKE, PIES, CREME ANGLAISE AND SAUCES: ALFREDO SAUCE, CAESAR SALAD, MAYONNAISE. MOST ANYWHERE AN EGG IS USED.
Preparation Instructions	COMMERCIAL FLAT-TOP GRIDDLEPREHEAT TEMP: 325A - 350AF PREHEAT GRIDDLE, SPRAY GENEROUSLY WITH NON-STICK COOKING SPRAY OR POUR 1 OZ OF OIL OR BUTTER OIL ONTO THE GRIDDLE. POUR 1-32 OZ CARTON OF THE LIQUID EGG PRODUCT ONTO THE GRIDDLE AND STIR FREQUENTLY WITH SPATULA UNTIL EGGS ARE SET. ABOUT 1



Attached Divisions 58
Super Class 4 - DAIRY
Class 21 - DAIRY
Category 159 - EGGS, FURTHER PROCESSED
Group 1650 - EGGS, HARD COOKED, WHOLE
Manufacturer Number 455 - MICHAEL FOODS INC
Manufacturer GLN Number 455
Minority Code 1 - NA
Brand Name GLENVIEW FARMS
Brand Type 2 - Exclusive
Country of Origin - Grown/Harvested US - United States
Country of Origin - Processed

Primary ASYS # 0827428
Secondary ASYS # 2627677
Primary PSYS # 080451
Product Master # 26187
USF Product # 26187
Manufacturer Product # 080451
Item ID 12270762
Cash and Carry Eligible Yes

Nutritional Values

Household Serving Size 1 egg			QTY UOM RDV		QTY UOM RDV		QTY UOM RDV		ALLERGENS	
	QTY	UOM	RDV							
Recommended Serving Size	45	g		Polyunsaturated Fat		Magnesium		Omega 3	Celery	Does Not Contain
Serving Size				Fat		Pantothenic Acid		Acids	Crustacean	Does Not Contain
Servings per Trade Item				Monounsaturated Fat		Acid		Omega 6	Eggs	Contains
Calories per Serving	70			Other Carbohydrates		Biotin		Acids	Fish	Does Not Contain
Calories from Fat per Serving	50			Ash		Riboflavin		Vitamin B6	Milk	Does Not Contain
Total Fat	5	g	6%	Zinc		Niacin		Vitamin B12	Mustard	Does Not Contain
Saturated Fat	1.5	g	8%	Iodine		Equivalent			Peanuts	Does Not Contain
Trans Fat	0	g		Folate		Thiamin		Vitamin B12	Sesame	Does Not Contain
Cholesterol	170	mg	57%	Phosphorous		Copper		Beta-Carotene	Soy	Does Not Contain
Sodium	55	mg	2%	Nutrient Relevant Data Provided		Soluble Fiber		Vitamin E	Tree Nuts	Does Not Contain
Total Carbohydrates	1	g	0%	Nutrient Relevant Data Provided		Insoluble Fiber		Vitamin K	Wheat	Does Not Contain
Dietary Fiber	0	g	0%			Alcohol			Allergen - Gluten (other than Wheat)	No
Total Sugar	1	g				Sugar			Gluten Free Certified	No
Added Sugars	0	g	0%			Alcohol			Gluten Free	No
Protein	6	g				Water			Halal Certified	No
Calcium	23	mg	2%						Kosher Certified	Yes
Iron	1	mg	6%						Contains Lactose	No
Potassium	57	mg	2%						Contains Latex	
Vitamin C									Made with Gluten Free Ingredients	
Vitamin D	1	mcg	6%						No MSG Added	Yes
Vitamin A									MSG Free	No
									No Nitrate/Nitrites Added	
									Vegan	
									Vegetarian	
									Allergen Relevant Data Provided	
									Allergen Relevant Data Provided	

Ingredients HARD COOKED EGGS CONTAINS: EGG

Merchandising

Merchandising Business Unit Name GROCERY & DAIRY - 100001
Merchandising Director Name CHEESE & DAIRY - 10004
Merchandising Desk Name CHEESE, EGGS, REF POTATOES - 1014
Merchandising Category Name EGGS, PRE-COOKED - 161
Merchandising Business Unit Associate GROCERY & DAIRY
Merchandising Director Associate DOLLARD
Merchandising Desk Associate MAZURKIEWICZ

Product Search Keywords

Benefits No Peeling ~ Ready-To-Serve ~ Vegetarian ~ Protein
Serving Suggestions CREATE YOUR OWN CUT FOR EGG SALAD, SALADS/SALAD BAR, APPETIZERS: SCOTCH EGGS, GARNISH: FOR POTATO SALAD, TUNA SALAD OR CHICKEN SALAD.

Preparation Instructions

Cat Seg Type 01 TYPE - EGGS PRECOOKED **Value** HARD COOKED
Cat Seg Type 02 FORM - EGGS PRECOOKED **Value** WHOLE PEELED
Cat Seg Type 03 FLAVOR - EGGS PRECOOKED **Value** PLAIN
Cat Seg Type 04 EGG PART - EGGS PRECOOKED **Value** WHOLE
Cat Seg Type 05 CHOLESTEROL CLAIM - EGGS PRECOOKED **Value** NO "CHOLESTEROL" CLAIM
Cat Seg Type 06 CAGE-FREE CLAIM - EGGS PRECOOKED **Value** NO "CAGE-FREE" CLAIM
Cat Seg Type 07 ORGANIC CLAIM - EGGS **Value** NO "ORGANIC" CLAIM

22100

 Jimmy Dean[®]


Pork Sausage Patties

Citric Acid, BHA, BHT and Propyl Gallate Added to Help Protect Flavor

INGREDIENTS: PORK, WATER, CONTAINS 2% OR LESS OF: SALT, SPICES, SUGAR, MONOSODIUM GLUTAMATE, CITRIC ACID, BHA, BHT, PROPYL GALLATE.

GLUTEN FREE



100 77900 22100 9



NET WT 12 LB (5.4 kg)

1.5

Nutrition Facts

Serving Size 1 patty (43g)
Servings Per Container 128

Amount Per Serving

Calories 170 Calories from Fat 140

% Daily Value*

Total Fat 16g 24%

Saturated Fat 5g 27%

Trans Fat 0g

Cholesterol 30mg 10%

Sodium 220mg 9%

Total Carbohydrate 0g 0%

Dietary Fiber 0g 0%

Sugars 0g

Protein 6g

Vitamin A 0% • Vitamin C 0%

Calcium 2% • Iron 2%

*Percent Daily Values are based on a diet of other people's secrets.

Keep Frozen

FOR FOODSERVICE USE

For Food Safety and Quality Purposes, this product must be cooked to a minimum internal temperature of 160°F prior to eating.

Preparation Directions:

Keep frozen until ready to use. For best results thaw sausage before preparation. Due to variances in cooking equipment time and or temperature may need adjustment.

Skillet:

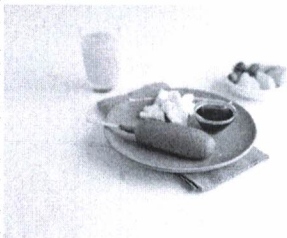
1. Preheat skillet over medium heat for 2 minutes.
2. Place thawed sausages in skillet.
3. Cook sausage for 10-12 minutes or until golden brown, turning occasionally for even browning, to a minimum internal temperature of 160°F.

Note: If patties are frozen, add 4-6 minutes.

Distributed by: Tyson Food Service,
Springdale, AR 72765-2020 USA
©2016 Tyson Foods, Inc.

www.tysonfoodservice.com • 1-800-261-4764

1914770, 11116377



Jimmy Dean® Whole Grain Original Pancake & Turkey Sausage Breakfast Sticks, 2.51 oz.

PRODUCT CODE: 10000038215 GTIN CODE: 00077900000072

Storage Method

Frozen

Cook Method

Bake

Convection

Microwave

Serving suggestions

Serve for breakfast grab and go or in the classroom.

Storage

SHELF LIFE	STORAGE	TEMP MAX	TEMP MIN
365 Days	Frozen	0 °F	0 °F

Preparation

Bake:

Ovens vary; cook times may need to be adjusted. From frozen or thawed: Conventional Oven 375°F; Thawed 6-10 minutes. Frozen 16-18 minutes.

Convection:

Ovens vary; cook times may need to be adjusted. From frozen or thawed: Convection Oven 350°F; Thawed 6-8 minutes. Frozen 14-16 minutes.

Microwave:

Ovens vary; cook times may need to be adjusted. From frozen or thawed: Microwave High; Thawed 45-60 seconds. Frozen 90 seconds.

Packaging information

MASTER CASE

Gross Weight	10.3218 lbs
Net Weight	9.4125 lbs
Cube	0.5504 ft3
Length	16.5625 in
Height	5.25 in
Width	10.9375 in

PALLET

TI	9
HI	8

More about this item

Add some kid-friendly excitement to the menu with Jimmy Dean® Original Pancake & Sausage Breakfast Sticks.

- Made with Jimmy Dean® turkey sausage and wrapped with delicious whole grain pancake batter
- Each breakfast stick provides 1.00 oz. grain and 1.00 oz. protein equivalent for easy menu planning
- Easy and fun to eat; great for breakfast at home or on-the-go

Ingredients

Turkey, Mechanically Separated Turkey, water, textured vegetable protein product (soy protein concentrate, zinc oxide, niacinamide, ferrous sulfate, copper gluconate, vitamin A palmitate, calcium pantothenate, thiamine mononitrate [B1], pyridoxine hydrochloride [B6], riboflavin [B2], and cyanocobalamin [B12]), contains 2% or less: salt, potassium lactate, spices, sodium phosphate, sodium diacetate, sodium lactate, BHA, BHT, citric acid. PANCAKE BATTER: Water, whole grain wheat flour, enriched wheat flour (wheat flour, niacin, reduced iron, thiamine mononitrate, riboflavin, folic acid), sugar, contains 2% or less: soybean oil, salt, dextrose, leavening (sodium acid pyrophosphate, sodium bicarbonate), artificial flavor, dried egg yolk, soy lecithin, nonfat dry milk. Cooked in vegetable oil.

Allergens

Eggs

Milk

Soy

Wheat

NUTRITION

Nutrition Facts

60 Servings Per Container

Serving Size 71g

Amount Per Serving

Calories

140

	Daily Value % *
Total Fat 5g	6%
Saturated Fat 1.5g	8%
Trans Fat 0g	
Cholesterol 10mg	3%
Sodium 360mg	16%
Total Carbohydrate 16g	6%
Dietary Fiber 2g	7%
Total Sugars 6g	
Includes 6g Added Sugars	12%
Protein 8g	
Vitamin A	0%
Vitamin C 0 mg	0%
Vitamin D 0 mcg	0%
Calcium 50 mg	4%
Iron 1mg	6%
Potassium 250mg	6%

CN STATEMENT

Each 2.51 oz. pancake batter wrapped precooked turkey & vegetable protein product link on a stick provides 1.00 oz. equivalent meat/meat alternate and 1.00 oz. equivalent grains for Child Nutrition Meal Pattern Requirements.

*The % Daily Value tells you how much a nutrient in a serving of food contributes to a daily diet. 2,000 calories a day is used for general nutrition advice.

To inquire if a signed copy of the product formulation statement or Child Nutrition statement is available for this item, please contact the Tyson Foodservice Customer Relations Team at 1-800-248-9766. Or email CustomerRelations@tyson.com.